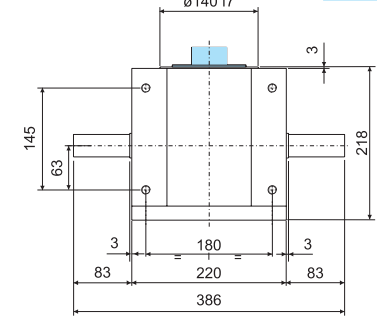
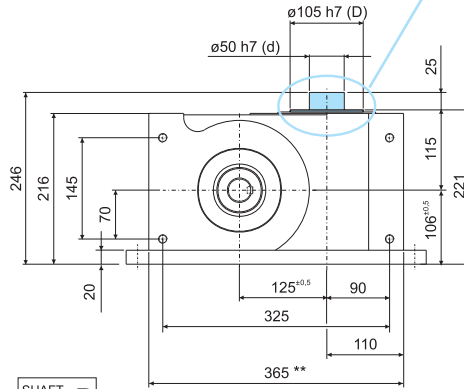
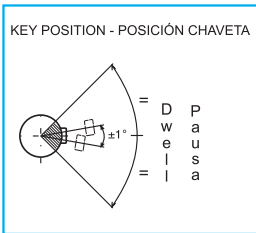
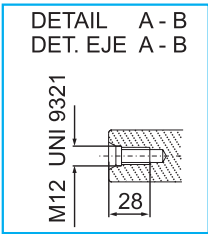
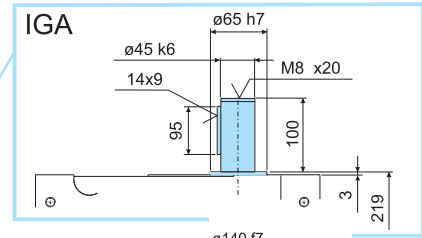


ROLLER GEAR INDEXER

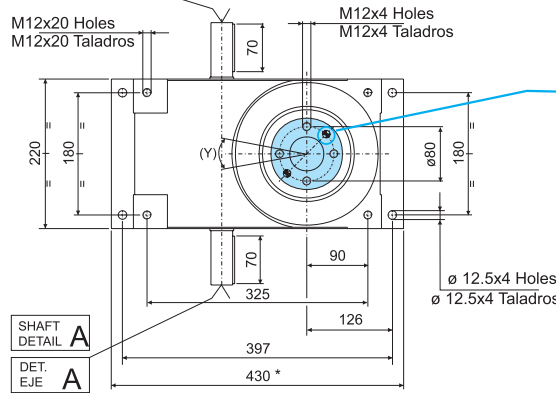
**IG
125**

INDEXADOR GLOBOIDAL

CAD File: IG-IGA 125
2D - 3D



SHAFT
DETAIL **B**
DET.
EJE **B**



**Dowels ø 12mm
Depth 18mm
By customer**

**Espigas ø 12 mm
prof. taladro 18 mm
prof A efectuar por
el Cliente**

SHAFT
DETAIL **A**
DET.
EJE **A**

ENG	WEIGHT
80 Kg	176.3 Lbs
CAST IRON ALLOY HOUSING CONVENTIONAL REPRESENTATION	
REPRESENTACIÓN CONVENCIONAL CAJA EN FUNDICIÓN	
80 Kg	176.3 Lbs
ESP	PESO

ENG

NOTES
* Specific dimensions referred to the execution of the indexer with protruding bottom plate. On request for working position 'C' and 'D'
** For working position 'C' or 'D' the cover bottom plate has the same dimension of the housing

ESP

N.B.
* Medida para version con placa sobresaliente Bajo demanda para posicion de trabajo 'C' 'D'
** Para posiciones de trabajo 'C' or 'D' la unidad es abastecida con plancia de cierre con el mismo tamaño de la caja

Rotating element - Elemento de Giro

SHAFT DETAIL A - B	Reference	Concentricity	Planarity	Repeatability referred to pitch radius Rp Higher precision on request			(Y) Position of the threaded holes	General manufacturing tolerance in compliance with UNI - ISO 2768-1 EN 22768-1
				Standard	2 cycles cam	3 cycle cam		
 d1 a b c STD diameter ^{K6} 32 35 10 8 MAX diameter ^{H6} 35 38 10 8 Diámetro MAX ^{H6} 35 38 10 8 Diámetro SDT ^{K6} 32 35 10 8	D	± 0.02 mm			*		0.18 mm 30'	
	Rp		± 0.02 mm	± 0.02 mm ± 1'4"	± 0.03 mm ± 1'36"	± 0.04 mm ± 2'8"		
	Rp		± 0.02 mm	± 0.02 mm ± 1'4"	± 0.03 mm ± 1'36"	± 0.04 mm ± 2'8"		
 d1 a b c Reference	D	± 0.02 mm			*		0.18 mm 30'	Tolerancias generales de fabricación con arreglo a UNI - ISO 2768-1 EN 22768-1
	Concentricidad		Planaridad	Estándar	2 Principios	3 Principios		
	Ripetibilità con referencia al radio primitivo RP Precisiones superiores a pedido							

ENG

ESP