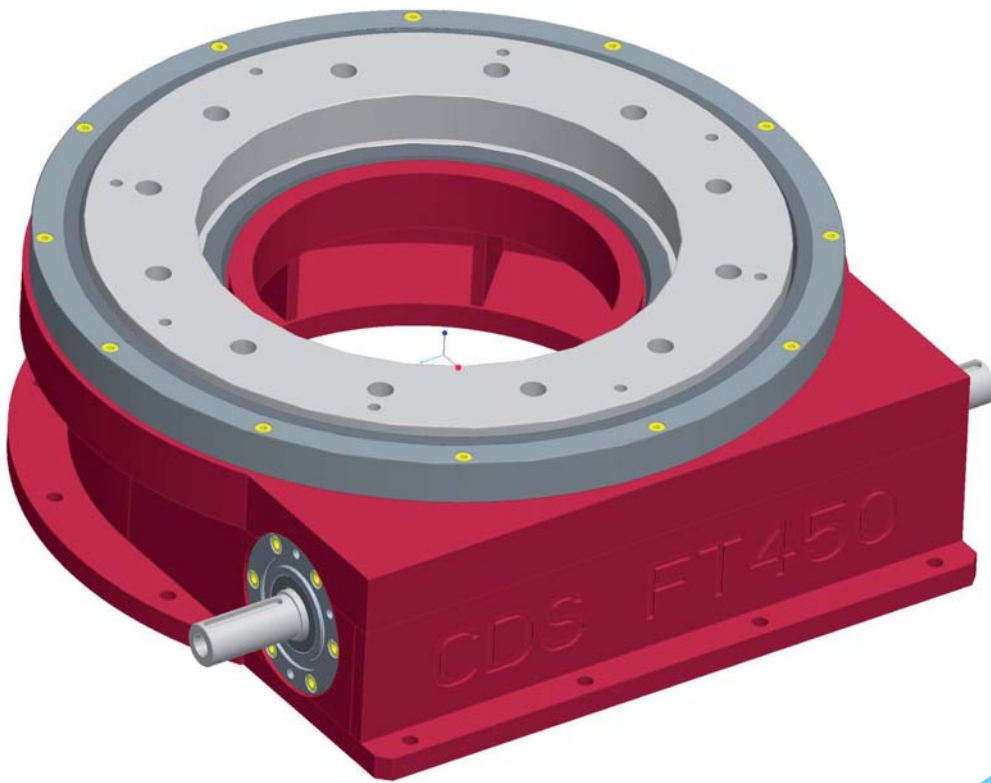




Your Global Partner For Cam Motion Technology

RING TABLE
FT SERIES



FT SERIES
meeting a new challenge!

November 08

C013eng/0



CDS div. Bettinelli f.lli S.p.A.
Via Leonardo da Vinci n.56
I-26010 Bagnolo Cremasco (CR)
www.cdsindexers.eu
cds@bettinelli.it

C.D.S. GmbH
Ulrichstr. 9
D-86641 Rain - Sallach
www.cdsindexers.de
info@cdsindexers.de



CDS CORP
27, Wilson Drive Unit C
07871 Sparta -NJ- USA
www.cdsindexers.com
info@cdsindexers.com

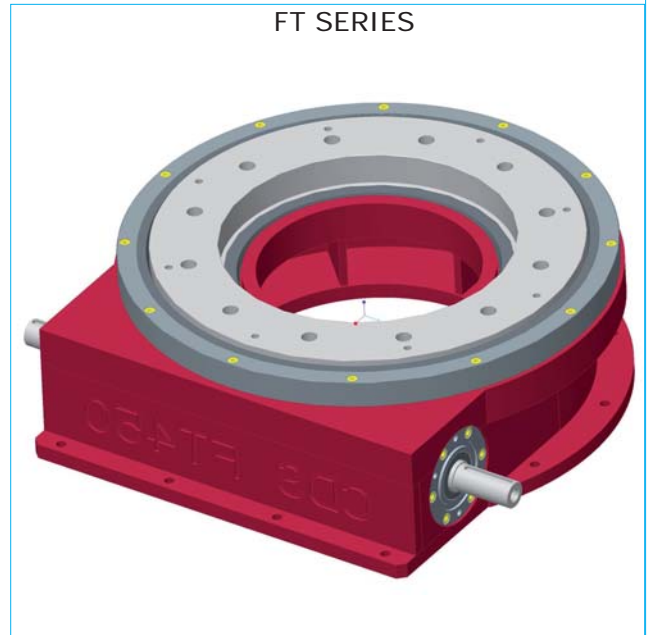
The FT series ring tables are driven by cylindrical barrel cams and were developed for particular industrial automation market segments requiring the following features:

- large central hole
- high number of stations or programmable positioning
- lighter duty tables, i.e. large tables that are of moderate weight

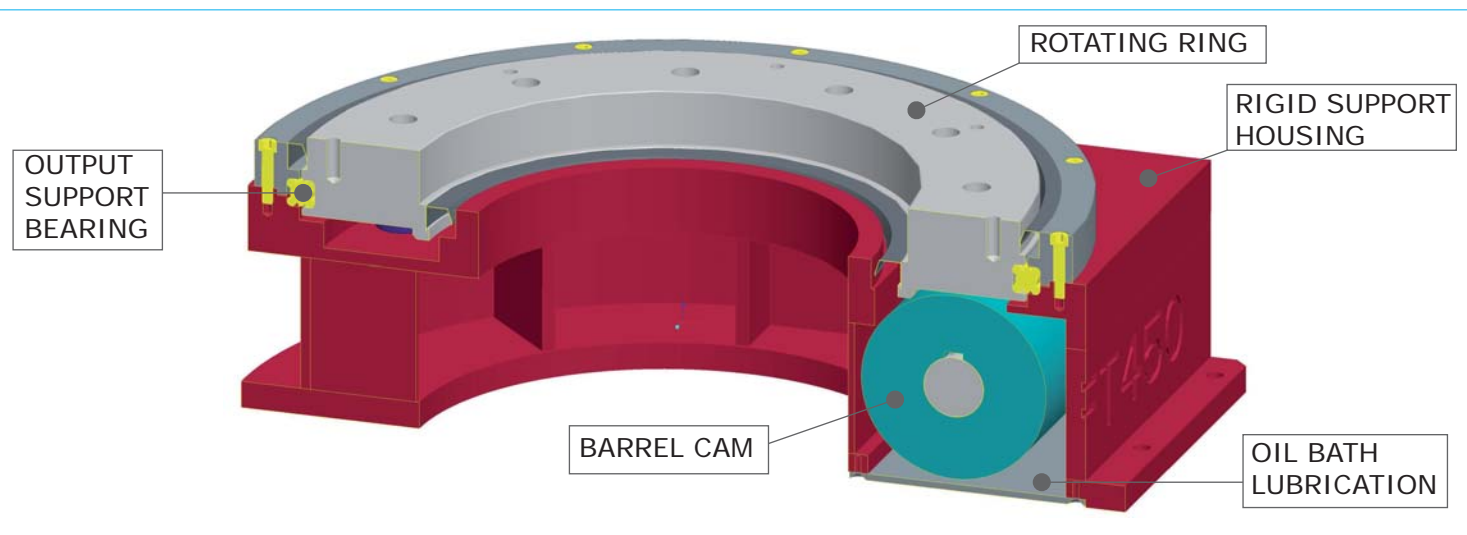
The main features of our FT series ring tables that distinguish them from the ring tables of other competitors consist of two important main points:

1) The FT series consists of a self-supported welded structure like the housing bodies of our other tables, which provides a structural support to the output bearing and rotating ring. Also, the cam shaft and barrel cam do not protrude into the center through hole as other competitors ring tables do. Our design allows 100% use of the open center area. In fact, the ring tables of competitors must be mounted on a very stiff and precise machine base to prevent the very thin output ring from becoming deformed and causing major errors on the output workpiece-support ring. Our FT series have been designed to eliminate this problem while maintaining a very small overall footprint and short height. A rigid and costly machine base is not needed to support the ring output as is the case with other competitor's models because CDS has designed this support feature in from the start.

2) This is a table that we can define as modular because the housing is welded and so its height can vary (without changing size) and become shorter to suit the cam geometry required by the customer.



TECHNICAL DESCRIPTION: FT SERIES RING TABLE SECTION VIEW

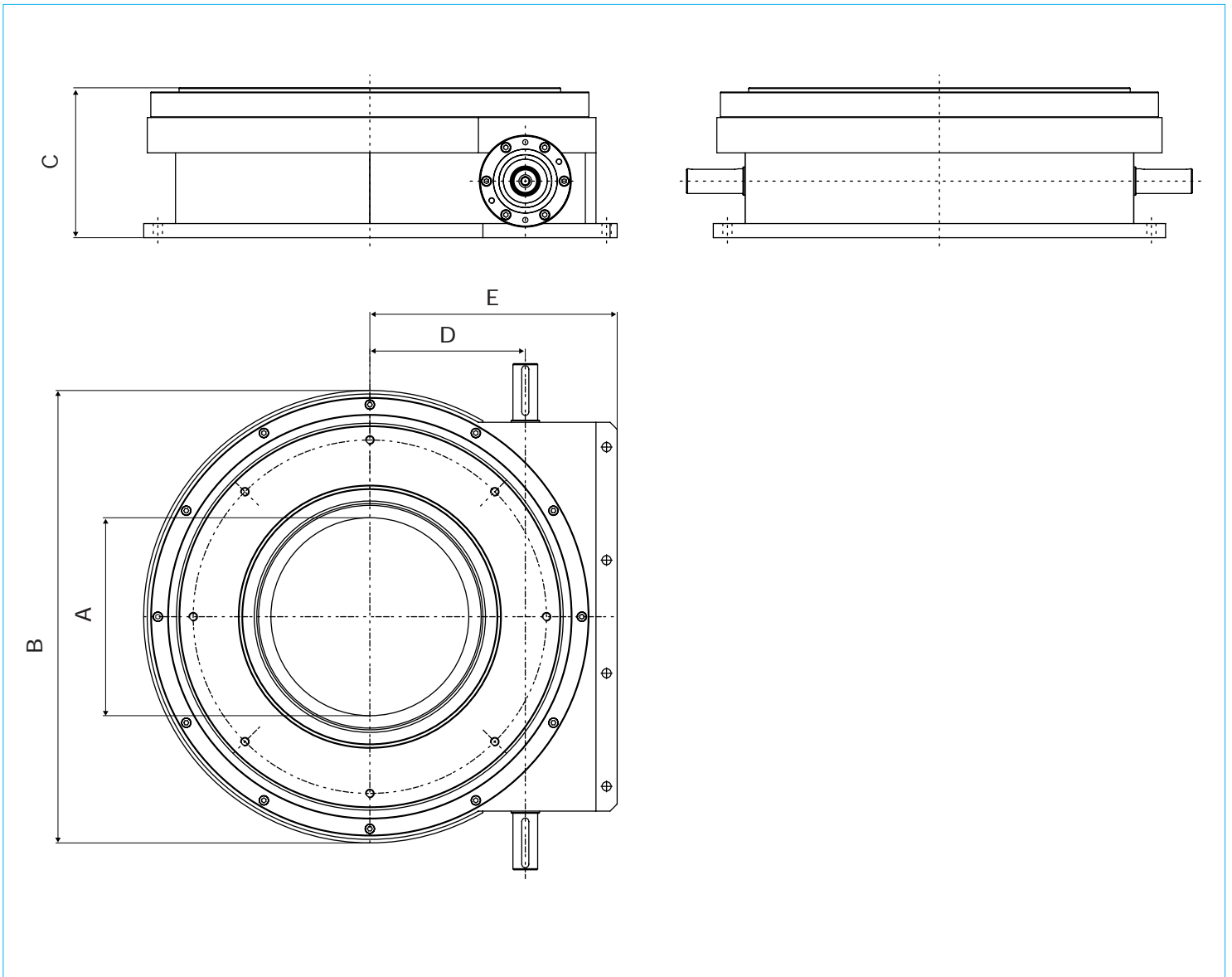


The section view of the FT series tables highlights the main design features of the table. You will notice immediately the geometrical features like the large through hole and the reduced overall height dimension of the table. You will also notice the bearing on the external diameter of the output ring with the four contact points to highlight the load capacity that this type of table can provide. The friction is also minimized, which at high speeds may lead to loss of power and increased temperatures. Also, note the weight of the table has been reduced to make it more suitable for the automation equipment.

TECHNICAL DATA- FT 850

N° of stops/ Index Angle	Cycle time (sec)	Mt s (Nm)	Mt d (Nm)	J (Kgm ²)	Mt in max (Nm)	Ca	Ø Roller	N° Roller
6/300°-60°	0,5	9000	6000	210	1400	5,53	50	18
	1	9000	6000	840	1400	5,53	50	18
	1,5	9000	6000	1890	1400	5,53	50	18
6/330°-30°	0,5	9000	6000	220	1100	5,53	50	18
	1	9000	6000	880	1100	5,53	50	18
	1,5	9000	6000	1980	1100	5,53	50	18
6/360°-0°	0,5	6000	6000	310	1500	SCREW	50	18
	1	6000	6000	1240	1500	SCREW	50	18
	1,5	6000	6000	2790	1500	SCREW	50	18
8/220°-140°	0,5	9000	6000	130	1250	5,53	50	16
	1	9000	6000	520	1250	5,53	50	16
	1,5	9000	6000	1170	1250	5,53	50	16
8/330°-30°	0,5	9000	6500	310	900	5,53	50	16
	1	9000	6500	1240	900	5,53	50	16
	1,5	9000	6500	2790	900	5,53	50	16
8/360°-0°	0,5	7000	7000	500	1300	SCREW	50	16
	1	7000	7000	2000	1300	SCREW	50	16
	1,5	7000	7000	4500	1300	SCREW	50	16
12/150°-210°	0,5	9000	6000	90	1250	5,53	50	24
	1	9000	6000	360	1250	5,53	50	24
	1,5	9000	6000	810	1250	5,53	50	24
12/330°-30°	0,5	9000	7500	550	700	5,53	50	24
	1	9000	7500	2200	700	5,53	50	24
	1,5	9000	7500	4950	700	5,53	50	24
12/360°-0°	0,5	8000	8000	850	1000	SCREW	50	24
	1	8000	8000	3400	1000	SCREW	50	24
	1,5	8000	8000	7650	1000	SCREW	50	24
16/120°-240°	0,5	9000	6000	75	1100	5,53	50	16
	1	9000	6000	300	1100	5,53	50	16
	1,5	9000	6000	675	1100	5,53	50	16
16/330°-30°	0,5	9000	8500	820	600	5,53	50	16
	1	9000	8500	3280	600	5,53	50	16
	1,5	9000	8500	8280	600	5,53	50	16
16/360°-0°	0,5	8500	8500	1200	800	SCREW	50	16
	1	8500	8500	4800	800	SCREW	50	16
	1,5	8500	8500	10800	800	SCREW	50	16

OVERALL SIZE - FT 450 - FT 590 - FT 850



TYPE	A (mm)	B (mm)	C (mm)	D (mm)	E (mm)
FT 450	280	640	212	220	350
FT 590	410	845	250	290	425
FT 850	550	1100	340	420	615

Division



HEAD OFFICE EU
C.D.S. div. di Bettinelli F.lli S.p.A.

Via Leonardo da Vinci n.56
I-26010 Bagnolo Cremasco (CR)

Tel. +39 0373 237 311
Fax +39 0373 237 538

Web: www.cdsindexers.eu
E-mail: cds@bettinelli.it



HEAD OFFICE DE
C.D.S. GmbH

Ulrichstr. 9
D-86641 Rain - Sallach

Tel. +49 90 90 921 112
Fax +49 90 90 921 113

Web: www.cdsindexers.de
E-mail: manfred.fischer@cdsindexers.de



HEAD OFFICE USA
C.D.S. CORP.

27, Wilson Drive Unit C
07871 Sparta -NJ- USA

Phone +1 973 300 0090
Fax +1 973 300 0061

Web: www.cdsindexers.com
E-mail: info@cdsindexers.com

